

## SOLENOID VALVES



4707 Massachusetts Ave. - P.O. Box 18128  
 Indianapolis, Indiana 46218-0128  
 Ph: 1-800-63 GOULD Fx: (317) 547-5234  
 Web: <http://www.gouldvalve.com>  
 E-mail: [gouldvalve@gouldvalve.com](mailto:gouldvalve@gouldvalve.com)

**1/8"-3" NPT  
 TYPE Q & QR  
 Series**

2-WAY – CAST BRONZE BODIES - PACKLESS  
 VELVETROL® INTERNAL PISTON PILOT OPERATED  
 GENERAL PURPOSE SOLENOID VALVES - FULL PORT  
 NORMALLY CLOSED OR NORMALLY OPEN



- ★ FOR: GENERAL SERVICE-AIR-INERT GASES-WATER-OIL-STEAM
- ★ PRESSURES: 5 PSI DIFFERENTIAL MINIMUM TO 400 PSI MAXIMUM
- ★ TEMPERATURE: -40°F TO 450°F. CLASS F OR N COILS
- ★ MOUNTING: INSTALL IN HORIZONTAL LINE WITH COIL UPRIGHT AND ON TOP

<b>SIZES 1/8" - 3" NPT FULL PORT</b>		
★ <b>SERVICE RATINGS</b>	Complete Pricing, Service & Electrical Ratings shown in Price Schedule. Valves will be furnished for 5-150 PSI Air-Water and 120 VAC Unless Otherwise Specified.	
NORMALLY CLOSED--		--NORMALLY OPEN
<b>Q-3B, Q-3EP, Q-3V</b>  <b>Q-3T</b>	GENERAL PURPOSE – AIR – WATER 5-150, 10-400 PSI (Normally Open to 300 PSI) 220°F. Max. Fluid Temp. Class F Coils: 120, 240, 480 VAC 60 Hz, 14Watts Max.	<b>QR-3B, QR-3EP QR-3V, QR-3T</b>
<b>Q4-3B, Q4-3EP Q4-3V, Q4-3T</b>	GENERAL PURPOSE: AIR – WATER - INERT GASES – WATER – OIL 5-150, 10-400 PSI (Normally Open to 300 PSI) 300°F. Max. Fluid Temp. Class F. Non-Standard Coils Available With Voltage, Wattage, and Lead Wire Length To Your Specs.	<b>QR-3B, QR-3EP QR-3V, QR-3T</b>
<b>Q-1-3T, Q-1-3EP</b> 	STEAM 5-150 PSI; 365°F Max. Fluid Temp., (-3EP: 5-50, 300°F); Class N 120, 240, 480 VAC 60 Hz, 20 Watts Max.	<b>QR-1-3T QR-1-3EP</b>
<b>Q4-1-3T, Q4-1-3EP</b>	STEAM (to 200 PSI) – HOT FLUIDS (to 450°F) SIMILAR TO Q4 Series EXCEPT High Temp.	<b>QR-1-3T, QR-1-3EP</b>
<b>ADD -1</b>	HIGH TEMP. (CLASS N) COILS - FLUID TEMP. TO 450°F. STEAM to 200 PSI.	<b>ADD -1</b>
<b>ADD -2</b>	EXPLOSION PROOF COIL HOUSING – UL CLASS I GROUP D, CLASS II GROUP E, F, G. NEMA 7	<b>ADD -2</b>
<b>ADD -3B, -3EP -3T, -3V</b>	LEAKPROOF PILOT SEAT: -3B (BUNA), -3EP ETHYLENE- PROPYLENE, -3T (TEFLON®) PTFE, -3V (VITON®) FLUOROCARBON	<b>ADD -3B, -3EP -3T, -3V</b>
<b>ADD -24</b>	WATER TIGHT COIL HOUSING - NEMA 4	<b>ADD -24</b>
<b>ADD -25</b>	DUST TIGHT COIL HOUSING - NEMA 5	<b>ADD -25</b>
<b>ADD -57</b>	MANUAL RESET – SAFETY SHUT-OFF, NO VOLTAGE RELEASE. SEE BULLETIN 210-Q57	<b>ADD -57</b>
<b>ADD -81, -84</b>	-81 SLOW CLOSE (REDUCES WATER HAMMER) -84 QUICK CLOSE (BOTH FACTORY SETUPS)	<b>ADD -81, 84</b>
<b>ADD -230</b>	SPECIAL CONSTRUCTION FOR GASOLINE AND DIESEL FUEL. SEE BULLETIN 230-Q	<b>ADD -230</b>

★ **CONSTRUCTION:**

CLASS F & N COILS are Waterproof, Fungusproof, Molded of Filled Polyester with 18" Leads.  
 BODIES are Sand Cast in Bronze rated 400 psi WOG. PISTON SPRINGS are 316 or 302 SS.  
 BONNET ASSEMBLIES are 304 SS TUBES silver soldered to Brass BONNET and TUBE PLUG.  
 PISTON ASSEMBLIES are Brass with Filled Teflon® PISTON RINGS, Stainless Steel EXPANDERS, and Buna, EP, Fluorocarbon, or Virgin Teflon® SEAT DISCS.  
 PILOT ASSEMBLIES are 416 SS ARMATURE with a 316 SS PILOT POINT and 316 SS PINS.

★ **SPECIALS:**

Teflon® Leak Proof Seat Screws, Teflon® Discs (Standard on all Steam Valves), Teflon® Coated Pistons & other Special Assemblies Available. Non-Standard Coils are Available with Voltage, Wattage, and Lead Wire Length to your specifications. Consult Factory.

See Price Schedule for "Terms and Conditions of Sale."

## PERFORMANCE, ORDERING AND INSTALLATION GUIDE

**ORDERING DATA**--SPECIFY PIPE SIZE, TYPE, FLUID, OPERATING PRESSURE, TEMPERATURE RANGE, ELECTRICAL SPECIFICATIONS, BACK PRESSURE (IF ANY).

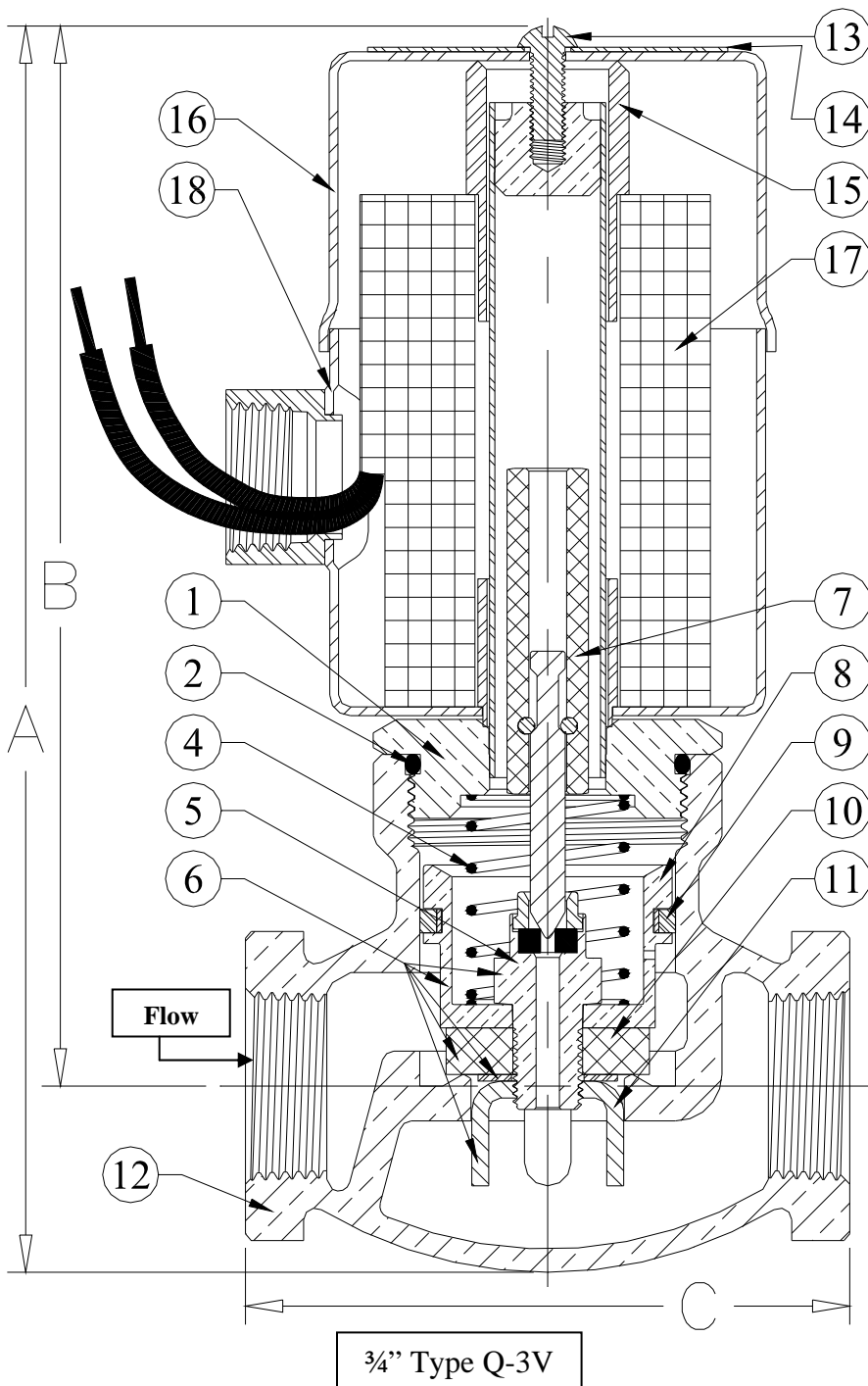
**FLOW CHARACTERISTICS**--SEE FLOW CURVES IN BULLETIN 5-FL, OR Cv FACTORS LISTED BELOW AND IN BULLETIN CP-1.

**OPERATION**--PISTON PILOT OPERATED. MINIMUM PRESSURE DROP OF 5 PSI ( $\Delta P$ ) IS REQUIRED ACROSS VALVE FOR OPERATION.

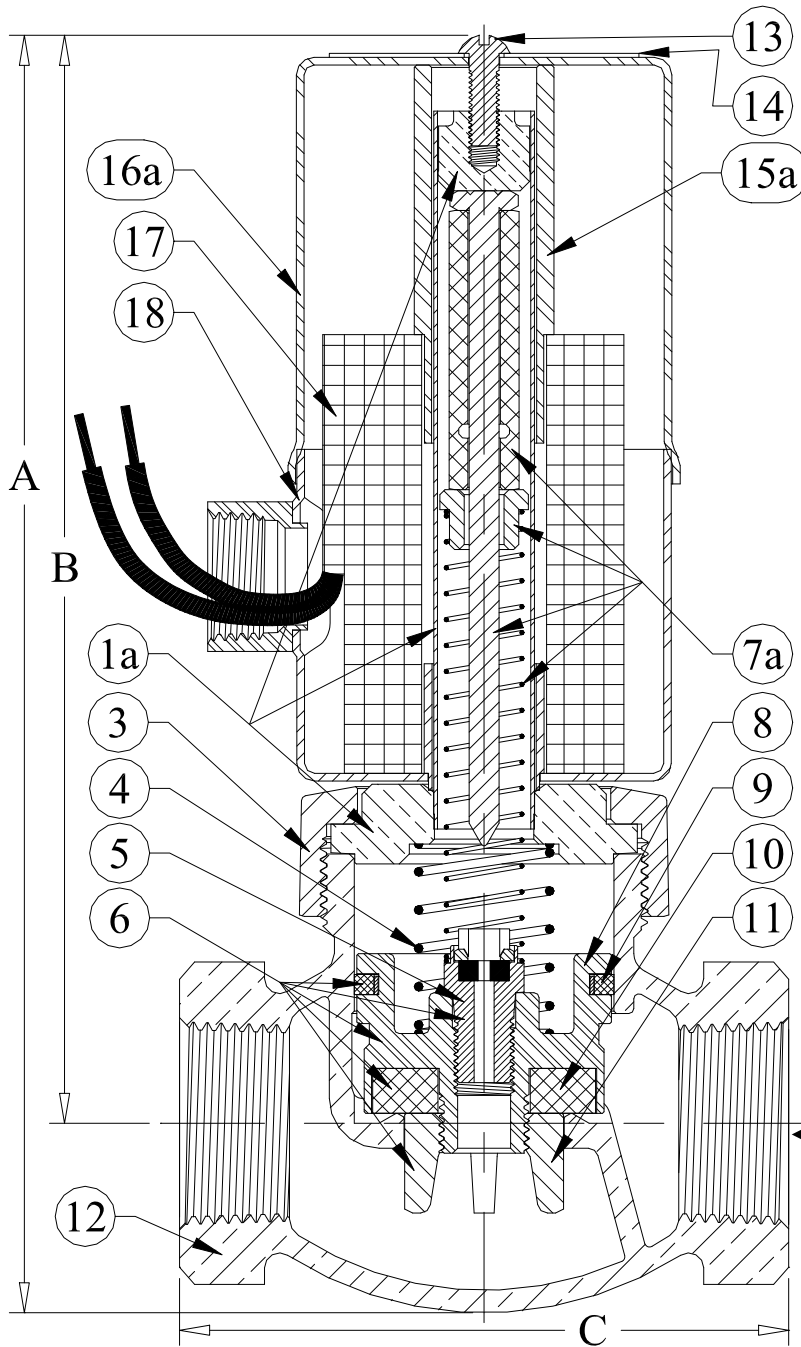
**MOUNTING**--MOUNT IN HORIZONTAL LINE WITH COIL VERTICAL AND ON TOP. INSTALL 40 MESH STRAINER (NO LARGER) AHEAD OF VALVE. CHECK FOR PROPER COIL VOLTAGE. MAKE SURE THAT THE FLOW ARROW ON VALVE BODY IS POINTING IN THE DIRECTION OF FLOW. PTFE TAPE STRONGLY RECOMMENDED FOR ALL JOINTS.

**OPERATING PRESSURE:** THE SOLENOID VALVE SHOULD BE ORDERED WITH *THE MAXIMUM RATED PRESSURE CLOSEST TO THE ACTUAL PRESSURE THE VALVE WILL OPERATE IN.* FOR EXAMPLE: IF YOUR APPLICATION IS FOR 40 PSI, ORDER A VALVE RATED 5-150 PSI *NOT* 10- 400 PSI.

**SERVICING**--SOLENOID VALVES SHOULD BE FREQUENTLY CHECKED FOR OPERATION, CLEANLINESS, & INTERNAL WEAR - REPAIR KITS ARE FACTORY AVAILABLE --GIVE SIZE, TYPE, SERIAL NUMBER OR OPERATING DATA (VOLTAGE, PRESSURE, ETC.)



Valve Size	1 N.C. Bonnet Assembly	1a N.O. Bonnet Assembly	2 Bonnet Seal	3 Bonnet Ring	4 Piston Spring	5 SeatScrew	6 Piston Assembly	7 N.C. Pilot Assembly	7a N.O. Pilot Assembly	8 Piston Only	9 Piston Ring & Expander	10 Seat Disc	11 Guide Nut	12 Body	13 Coil Screw	14 Nameplate
	Q-3V*	QR-3V*	BOTH	BOTH	BOTH	BOTH	BOTH	Q-3V*	QR-3V*	BOTH	BOTH	BOTH	BOTH	BOTH	BOTH	BOTH
1/8	403-2	403-2R	2-121x	N/A	37-14	415-3x	407-3x	25-1	32R1	402	57	36-12x	406	400-8	9	44-1-1
1/4	403-2	403-2R	2-121x	N/A	37-14	415-3x	407-3x	25-1	32R1	402	57	36-12x	406	400-4	9	44-1-1
3/8	403-2	403-2R	2-121x	N/A	37-14	415-3x	407-3x	25-1	32R1	402	57	36-12x	406	400-1	9	44-1-1
1/2	403-2	403-2R	2-121x	N/A	37-14	415-3x	407-3x	25-1	32R1	402	57	36-12x	406	400-2	9	44-1-1
3/4	413-2	413-2R	2-125x	N/A	37-3	415-3x	417-3x	25-1	32R1	412	159	36-34x	416	410	9	44-1-1
1	423-2	423-2R	N/A	428	37-3	415-3x	427-3x	25-1	32R1	422	58	36-1x	429	420	9	44-1-1
1-1/4	433-2	433-2R	N/A	438	37-2	415-3x	437-3x	25-1	32R1	432	434	36-114x	439	430	9	44-1-1
1-1/2	443-2	443-2R	N/A	448	37-2	415-3x	447-3x	25-1	32R1	442	93	36-112x	449	440	9	44-1-1
2	453-2	453-2R	2-40x	458	37-2	415-3x	457-3x	25-1	32R1	452	176	36-2x	459	450	9	44-1-1
2-1/2	463-2	463-2R	2-42x	468	37-2	415-3x	467-3x	22-1	32R6	462	102	36-212x	469	460	9	44-1-1
3	473-2	473-2R	2-46x	478	37-2	415-3x	477-3x	22-1	32R6	472	474	36-3x	479	470	9	44-1-1



Valve Size	15 N.C. Nip	15a N.O. Nip	16 N.C. Coil Cover	16a N.O. Coil Cover	17 Coil	18 Coil Can
	Q-3V*	QR-3V*	Q-3V*	QR-3V*	BOTH	BOTH
1/8	115-2	115-3	89	89NO	Consult Factory or List Price Schedule	87
1/4	115-2	115-3	89	89NO		87
3/8	115-2	115-3	89	89NO		87
1/2	115-2	115-3	89	89NO		87
3/4	115-2	115-3	89	89NO		87
1	115-2	115-3	89	89NO		87
1-1/4	115-2	115-3	89	89NO		87
1-1/2	115-2	115-3	89	89NO		87
2	115-2	115-3	89	89NO		87
2-1/2	115-2	115-3	89	89NO		87
3	115-2	115-3	89	89NO	87	

Valve Size	CV Factor	Valve Dimensions							
		N. C.				N. O.			
		A	B	C	wt lbs	A	B	C	wt lbs
1/8	1.3	6.31	5.5	2.75	3	7.31	6.5	2.75	4
1/4	2.1	6.31	5.5	2.75	3	7.31	6.5	2.75	4
3/8	2.3	6.31	5.5	2.75	3	7.31	6.5	2.75	4
1/2	3.9	6.31	5.5	2.75	3	7.31	6.5	2.75	4
3/4	5.1	6.69	5.7	3.25	4	7.69	6.7	3.25	4
1	11.6	7.0	5.83	3.81	5	8.0	6.83	3.81	5
1-1/4	12.1	7.7	6.3	4.25	6	8.7	7.3	4.25	7
1-1/2	26	8.27	6.64	4.88	8	9.27	7.64	4.88	9
2	48	8.88	6.94	5.88	13	9.88	7.94	5.88	14
2-1/2	75	9.63	7.3	7.00	18	10.63	8.3	7.00	18
3	100	10.6	7.8	8.25	27	11.6	8.8	8.25	27

\* Also for -3B, -3EP, & -3T Valves

FLOW

1 inch Type QR-3V

Valve Size	1b N.C. XP Bonnet Assembly	1c N.O. XP Bonnet Assembly	7b N.C. XP Pilot Assembly	7c N.O. XP Pilot Assembly	20 Coil Endplates	21 Coil Spring	22 N.C. XP Cover	N.O. XP Cover	23 XP Bolts	XP Washers	24 XP Base
	Q-3V-2*	QR-3V-2*	Q-3V-2*	QR-3V-2*	Q-3V-2* QR-3V-2*	Q-3V-2* QR-3V-2*	Q-3V-2*	QR-3V-2*	Q-3V-2* QR-3V-2*	Q-3V-2* QR-3V-2*	Q-3V-2* QR-3V-2*
1/8	403-2XP	403-2RXP	22-1	32R-6	113	37-2	42NC	42NO	9-4	46-3	41A
1/4	403-2XP	403-2RXP	22-1	32R-6	113	37-2	42NC	42NO	9-4	46-3	41A
3/8	403-2XP	403-2RXP	22-1	32R-6	113	37-2	42NC	42NO	9-4	46-3	41A
1/2	403-2XP	403-2RXP	22-1	32R-6	113	37-2	42NC	42NO	9-4	46-3	41A
3/4	413-2XP	413-2RXP	22-1	32R-6	113	37-2	42NC	42NO	9-4	46-3	41A
1	423-2XP	423-2RXP	22-1	32R-6	113	37-2	42NC	42NO	9-4	46-3	41A
1-1/4	433-2XP	433-2RXP	22-1	32R-6	113	37-2	42NC	42NO	9-4	46-3	41A
1-1/2	443-2XP	443-2RXP	22-1	32R-6	113	37-2	42NC	42NO	9-4	46-3	41A
2	453-2XP	453-2RXP	22-1	32R-6	113	37-2	42NC	42NO	9-4	46-3	41A
2-1/2	463-2XP	463-2RXP	24-1	32R-7	113	37-2	42NC	42NO	9-4	46-3	41A
3	473-2XP	473-2RXP	24-1	32R-7	113	37-2	42NC	42NO	9-4	46-3	41A

size	A	B	C	wt
1/8	7	6.19	2.75	7
1/4	7	6.19	2.75	7
3/8	7	6.19	2.75	7
1/2	7	6.19	2.75	7
3/4	7.38	6.38	3.25	8
1	7.63	6.44	3.81	9
1-1/4	8.38	6.88	4.25	10
1-1/2	8.88	7.25	4.88	12
2	9.81	7.69	5.88	17
2-1/2	10.13	8.25	7	22
3	11.19	8.38	8.25	31

Physical Dimensions of Normally Closed Valves

The Explosionproof housing is constructed of two (2) machined, enamel painted sand-cast gray iron parts bolted together, threaded onto the bonnet assembly and rigidly cemented in place. Once assembled the housing will *not* rotate. NEMA 4, NEMA 5, or NEMA 7 ratings are available with this housing.

size	A	B	C	wt
1/8	8.13	7.31	2.75	8
1/4	8.13	7.31	2.75	8
3/8	8.13	7.31	2.75	8
1/2	8.13	7.31	2.75	8
3/4	8.50	7.50	3.25	9
1	8.75	7.56	3.81	10
1-1/4	9.50	8.00	4.25	11
1-1/2	10.00	8.38	4.88	13
2	10.94	8.81	5.88	18
2-1/2	11.25	9.38	7	22
3	12.31	9.50	8.25	31

Physical Dimensions of Normally Open Valves

\* Also for -3B, -3EP, & -3T Valves

